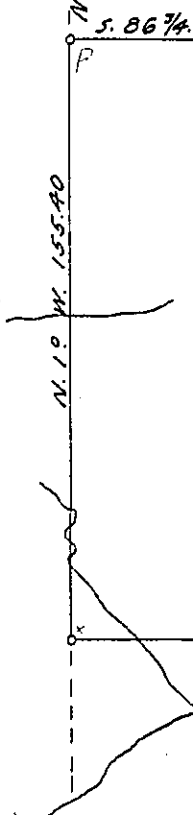


Perry County ✓
Ross Mitchel
90^{as} 102^r & allowance
part of 270^{as} 27^r

Ret^d &c. 4th Novem^r. 1848.
in al.

752 Cumb^d
Accepted 3^d Dec^r. 1827.

Near fallen R.O.
Thos Burns
Now



D
heny Co
name of
Benjami
and fifty
and High

To) Jno
SU

IN TE